

## Miniature Pulse Valves

A Normally-Open 3-way valve that closes shortly after being pressurized and remains closed until supply pressure is exhausted and repressurized. Widely used in control circuits.



**Medium:** Air

**Input Pressure:** 40 to 150 psig/20 bar max.

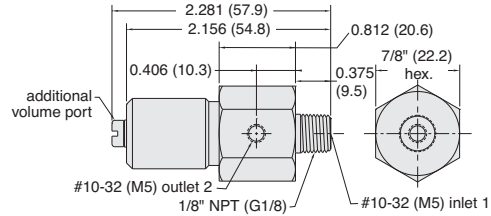
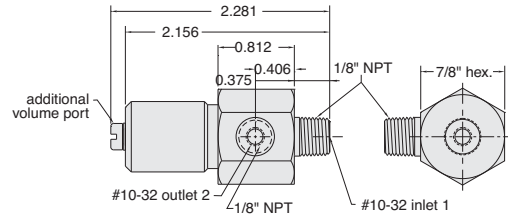
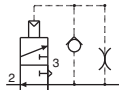
**Mounting:** 1/8" NPT (G1/8) thread; nut furnished

**Volume Chamber:** #10-32 (M5)

**Operation:** Converts a continuous supply of inlet air into a pulse of approximately 100 milliseconds

**Response:** 300 cycles per minute; time delay may be increased by adding standard Clippard volume chambers not to exceed 3 cu. in.

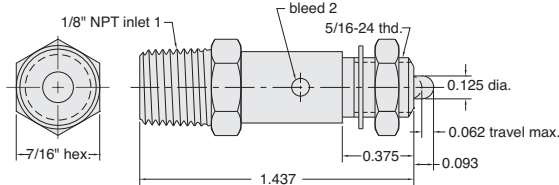
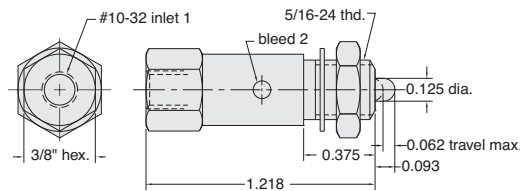
**Construction:** Body - ENP brass, Seals - Buna-N rubber, Spring - stainless steel, Poppet - Delrin®



Part No.	Description
PV-1	Pulse Valve, #10-32
PV-1-M5	Pulse Valve, M5 Metric
PV-1P	Pulse Valve, 1/8" NPT

## Normally-Closed 2-Way Pilot Sensor

For use with pressure piloted control circuits, can repeatedly detect a position within 0.005" properly mounted. In jigs or fixtures it will signal correct position and start-ok to control circuit.



**Medium:** Air

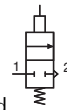
**Stem Travel:** 1/16" max. (will open and close in as little as 0.005")

**Input Pressure:** 300 psig max.

**Air Flow:** 3 scfm @ 50 psig; 6 scfm @ 100 psig

**Force For Full Stem Travel:** 7 oz. nominal

**Mounting:** #15/16-24 thread. Nut and lockwashers furnished

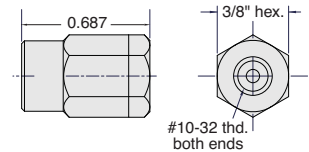


Part No.	Description
MPS-2	Poppet Valve with Pilot Sensor, #10-32
MPS-2P	Poppet Valve with Pilot Sensor, 1/8" NPT

## In-Line Fixed Orifice Air Chokes



Each choke is calibrated for precise flow



**Medium:** Air

**Material:** Brass

**Working Range:** 0 to 300 psig max.

Part No.	Description
MAC-A	Air Choke, 0.0135" Hole, Yellow Disk
MAC-B	Air Choke, 0.010" Hole, Green Disk
MAC-C	Air Choke, 0.0075" Hole, Blue Disk
MAC-D	Air Choke, 0.006" Hole, Red Disk

## Additional Valve Specifications

**Materials:** Brass body, Buna-N seals, stainless steel stem and spring

**Temperature Range:** 32 to 230°F (0 to 110°C)

**Options:** Consult the factory concerning the price and availability of the following standard options:

<b>NP</b> - Nickel Plating	<b>E</b> - EPDM Seals
<b>ENP</b> - Electroless Nickel Plating	<b>V</b> - Viton Seals
<b>M5</b> - M5 x 0.8 threaded ports	<b>MG</b> - G1/8 ports